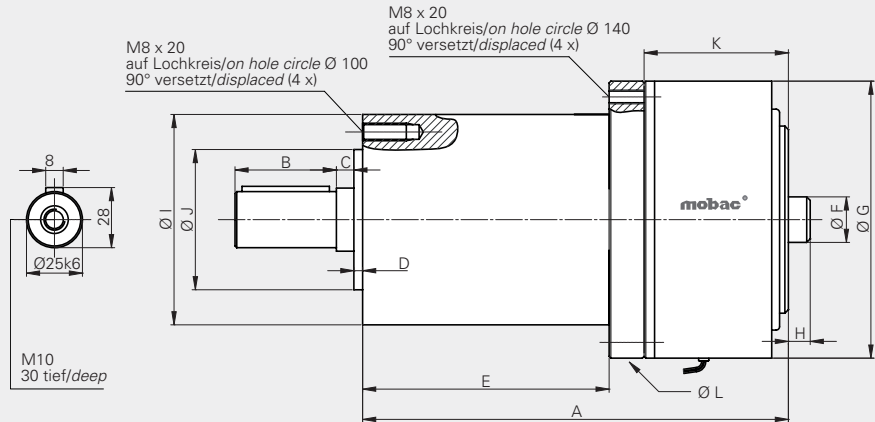
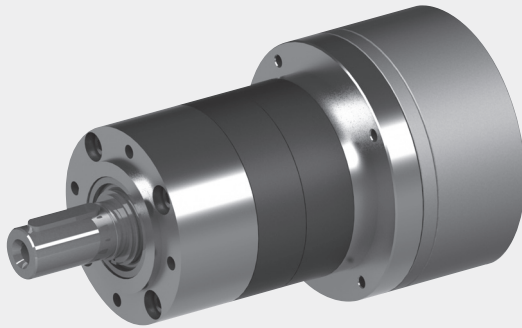


# Stromerregte Hysteresebremsen mit Untersetzung

# Current Controlled Hysteresis Brakes with Gear Ratio



## Technische Daten / Technical Data

Type	Drehmoment Torque (Nm)	Arbeitsstrom Working current (mA)	max. Drehzahl rpm	zul. Verlustleistung Possible dissipation		Gewicht Weight kg
				5 min. unterbrochen interrupted	(Watt) kontinuierlich continuous	
HB-450M-2G16	2,0 - 73	473	200	670	160	14,6
HB-450M-2G25	3,1 - 110	473	200	670	160	14,6
HB-750M-2G16	3,0 - 100	410	200	1000	200	19,1
HB-750M-2G25	4,5 - 210	410	200	1000	200	19,1

## Abmessungen / Dimensions (mm)

A	B	C	D	E	ØF	ØG	H	I	J	K	L
231	50	2	9,5	140	21	137,7	12,5	120	80	61	158
231	50	2	9,5	140	21	137,7	12,5	120	80	61	158
231	50	2	9,5	140	26	158,0	12,5	120	80	83	158
231	50	2	9,5	140	26	158,0	12,5	120	80	83	158